



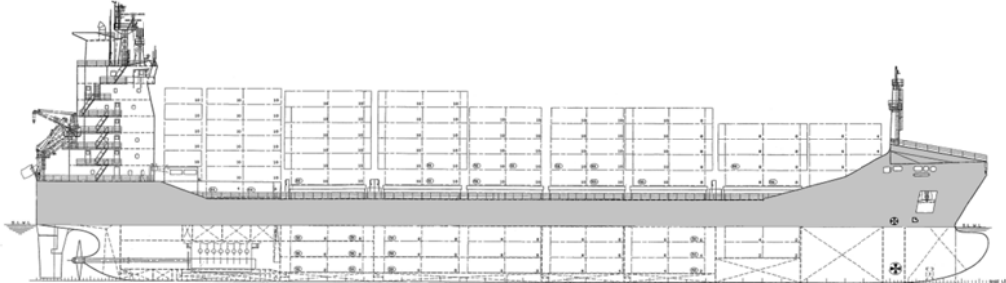
MV "Ruth Borchard"

Gearless cellular container vessel

Class: GL +100 A5 "Containership" IW NAV-O SOLAS-II-2, Reg. 19 + MC AUT

Built 2000 at Hanjin Heavy Industries & Construction Co. Ltd. (No.646)

IMO No. 9212034



Main Dimensions

Length over all	158,70 m
Length between perpendiculars	150,00 m
Breath moulded	25,60 m
Depth to main deck	13,70 m
Design draft	9,00 m
Summer draft	9,20 m
Deadweight	15315 t
Gross Tonnage	14278
Net Tonnage	4914
(according to Class Certificate)	

Main Engine

Wärtsilä NSD Sulzer 8RTA 62U (2 stroke), 17760 kW at 113 rpm
Equipped with Slow Steaming Kit

Auxiliaries

3 MAN B&W 7 L23/30H, 1118 kW at 900 RPM
1 Emergency Diesel Volvo Penta TAMD71 B-RC, 156 kVA

Speed

range about 13kn to 21,5kn

Tank Capacity

HFO 1745 m³, MDO 148,3 m³, Ballast 5810 m³ (all about)

Communication

Inmarsat Standard C – Telex, Data
Inmarsat Fleet 7 Broadband - Phone, Fax, Data
Iridium Open Port – Phone, Data
GMDSS fitted

Nautical Aids

Magnetic compass, Gyro, HCS, GPS, RDX, RDS, ARPA, ECDIS, AIS,
VDR, LOG, ES, STGTEL, DSL, LRIT, BNWAS
(according to Class Certificate)

Other outfit

Bowthruster Kawasaki 900 kW electrically driven,
2 combined windlass / self-tensioning mooring winches
2 self-tensioning mooring winches
1 fixed pitch propeller

Container intake

Subject to vessel's stability / trim / permissible weight		
Deck	818 units 20'	or 372 unit's 40' + 74 units 20'
Holds	398 units 20'	or 188 unit's 40' + 22 units 20'
Total	1216 units 20'	or 560 unit's 40' + 96 units 20'

Stability

Homogenously loaded with containers of 14 t each with center of gravity at 45% of container height / IMO stability criteria
790 TEU

Container fittings

In holds fixed cell guides for 40' containers which alternatively can be used for two containers. All restraint devices and necessary loose securing / lashing material for stowage of 20' containers are on board.

On deck vessel is equipped with fixed restraint devices and necessary loose securing / lashing material for a full load up to and including 6th tier.

45' and 48' containers can be carried on deck hatch covers No. 2, No. 3, No. 6 and No. 7 from 2nd tier except side-end container loaded from third tier. 48' containers should be carried on every other bay. Stowage 142 unit's 45' + 230 unit's 40' + 74 unit's 20'

Permissible Stack weights

Hold Tank Top	120 t / 150 t	per 20' / 40' stack
Hatch Cover	60 t / 90 t	per 20' / 40' 45' 48' stack
Distribution of containers weights within a single 20'/40' stack to comply with the Cargo Securing Manual approved by Class Society.		

Hatches

7 hatches / 5 holds covered by 13 steel pontoons consist of two independent panels PS & SB except hatch No. 1 (one panel). All pontoons can be worked independently without sequence.

Reefersockets

200 reefer sockets including 100 in holds
450 V, 32A, 60 Hz, 3 phases